

Planetary Centrifugal Mixer

THINKY MIXER

ARE-312



Going one step further than the flagship models, the next generation of world-standard models have made their debut.

- ✓ Improved mixing power and defoaming power
- ✓ Suppresses the temperature rise of the main unit and allows temperature measurement inside the device
- ✓ Communication function supports traceability and control from external devices
- ✓ CE certified model (EN61010-1:2010+A1:2019)
- ✓ Long-term operation is possible even with highly loaded materials (maximum operation time 30 minutes)
- ✓ Improved safety with the addition of an impact sensor

Maximum capacity

310 g

Standard container

300 & 150ml
HDPE container

Application

Intuitive operation interface and VA panel adopted. Displays the rotation speed during operation in real time



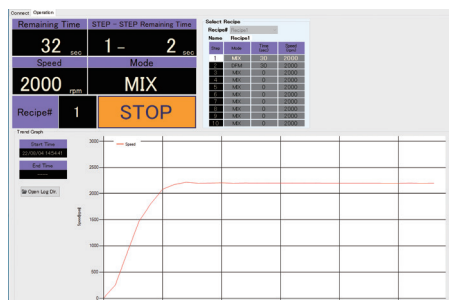
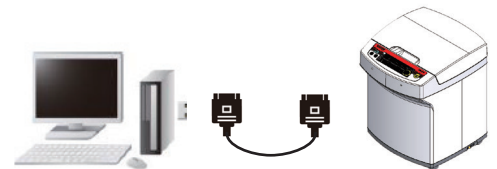
Step, mixing/defoaming mode, time, and rotation speed can be set using the three buttons "SELECT", "+" (plus), and "-" (minus), and up to 20 recipes can be registered.

In addition, the rotation speed (revolution) during operation is displayed in real time in the center of the panel.

Communication function

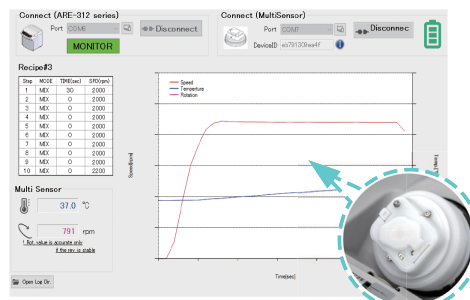
Provides "remote control" and "traceability" functions.

The communication protocol is publicly available. In addition, a Windows application that uses communication functions is included as standard.



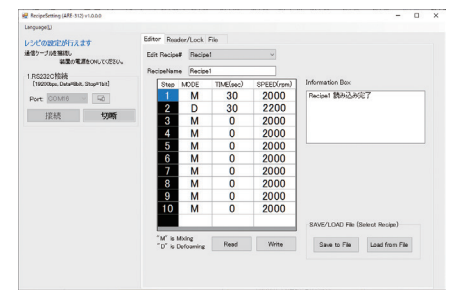
Controller

You can start/stop operation, report operating status, report abnormal stop information, and output device information from external devices.



monitoring

Get mixer operating information. It can also be linked with multiple sensors depending on the operating status. Measured data can be saved to a file.



Recipe settings

You can edit recipes from your PC. It also has recipe file import/export and recipe lock functions.

Specifications

| | | |
|---------------------------------|-------------------|--|
| Product name | | Planetary Centrifugal Mixer "THINKY MIXER" |
| Model | | ARE-312 |
| System | | Planetary propeller-less mixing |
| Operation Time Setting | | Timer setting range: 0 s to 30 min in 1 s increments |
| Revolution speed | Mixing mode | 0rpm or 200 to 2200rpm (adjustable in 10rpm increments) |
| | Defoaming mode | 0rpm or 400 to 2400rpm (adjustable in 10rpm increments) |
| Rotation Speed Mixing mode | Voltage | Maximum of 880rpm (1/2.5 relative to revolution speed) |
| | Power Consumption | Defoaming mode /Maximum of 65rpm (1/36.7 relative to revolution speed) |
| External Communication Function | | RS232C serial port (D sub 9 pin) |

| | | |
|-----------------------|-------------------|---|
| Programming Function | | 20 memories with 10 steps |
| Standard Container*1 | | Inner volume:300 ml and 150 ml , Material: HDPE |
| Maximum Capacity*2 | | 310 g |
| Power Supply | Voltage | Single-phase AC100~230V±10%、50/60Hz |
| | Power Consumption | Approx. 50 VA (standby) Max 900 VA (operation) |
| Operating Environment | | 10 to 35 °C, 35 to 85 % RH(without condensation) |
| Safety Mechanism*3 | | Revolution Sensor, Vibration Sensor, impact Sensor, Door Sensor |
| Unit Dimensions | | H390 × W300 × D340 (mm) |
| Unit Weight | | Approx. 21 kg |

*1: Contact us because the actual volume of mixing may vary depending on the containers, materials, and conditions.

*2: Total mass to mount on the cup holder, including materials, containers, and adapters.

*3: Products are shipped and delivered in a locked state. Release the lock before use.

Product appearance/specifications may change without notice.

THINKY CORPORATION

Headquarters: 2-16-2 Sotokanda, Chiyoda-ku, Tokyo 101-0021
Phone : +81-3-5207-2713 Fax : +81-3-5289-3281

THINKY USA Inc. : 23151 Verdugo Drive, Suite 112 Laguna Hills, CA 92653, USA

THINKY CHINA: East building, HaiAn Kafunuo Mansion, Shennan road,
Qianhai road, Nanshan district, Shenzhen

<https://www.thinkymixer.com/en-gl/>

Sales agent