

EVERY LIQUID  
HAS A **UNIQUE**  
FINGERPRINT

**ColloidTek**  
Visiokatu 4  
33720 Tampere  
FINLAND

**Jere Jokinen**  
*Sales Manager*  
jere.jokinen@collo.fi  
+358 50 571 5407

**Mikko Tielinen**  
*Chief Sales Officer*  
mikko.tielinen@collo.fi  
+358 40 728 4135

**collo.fi**

**Collo<sup>®</sup>**



THE FUTURE  
OF QUALITY  
CONTROL

Collo Lab Analyzer

**Collo<sup>®</sup>**

# TOTAL QUALITY CONTROL

Collo Lab Analyzer is a next generation dielectric liquid analyzer, unlocking a new level of quality control. It provides a holistic real-time view into the behavior of liquids.

The Collo Lab Analyzer's unique capabilities enable smooth, simple, and cost-effective quality control. Because of its ability to measure multiple variables simultaneously, you can easily compare liquids to baseline measurements to see how different or similar they are.

Collo recognizes deviations in quality instantly, so you can check and ensure product quality in real-time and at every step.

*Gain comprehensive and real-time understanding of quality for every type of liquid with the same sensor.*

# EVERY LIQUID HAS A FINGERPRINT

The Lab Analyzer detects and displays a unique liquid fingerprint for each liquid instantly, providing real-time insights into its quality. The Lab Analyzer can measure up to 8 parameters at the same time, providing comprehensive understanding of liquid quality.

The Lab Analyzer uses a dielectric sensor to extract data from any liquid of any viscosity or dry mass – from thick slurries to chemicals and pure water.

Collo's novel measurement technology is so sensitive that it can distinguish even very slightly differing liquids from each other.

*Suitable for all liquids, from thin to thick, with any viscosity or dry mass.*

# CREATE YOUR GOLDEN STANDARD FOR QUALITY

Collo can create a personalized liquid fingerprint quality control method for your system by customizing it to match your products, control points and baselines. Test protocols are then conducted to develop an analytical model for quality control. The Lab Analyzer's continuous & real-time measurement enables comprehensive and instant results for faster analysis, speeding up your quality control.

Measure the overall quality of your process continuously and catch quality anomalies in real-time. Collo offers the devices, support, training and analysis needed for total quality control.



Liquid Analyzer

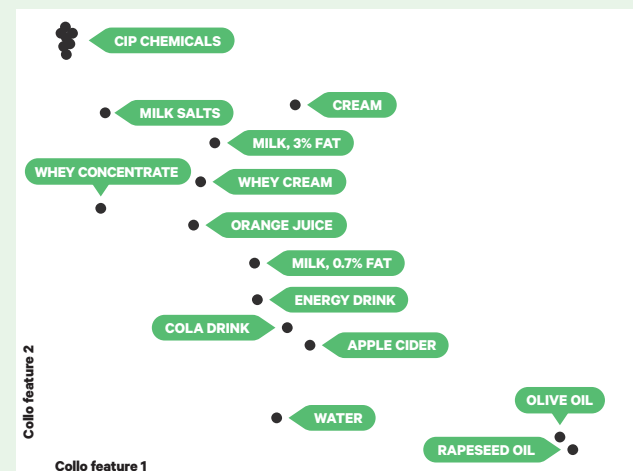
AI

Analytics

Total Quality



## COLLO ANALYZER: FOR EVERY TYPE OF LIQUID



## DETECT ANOMALIES IN REAL-TIME

